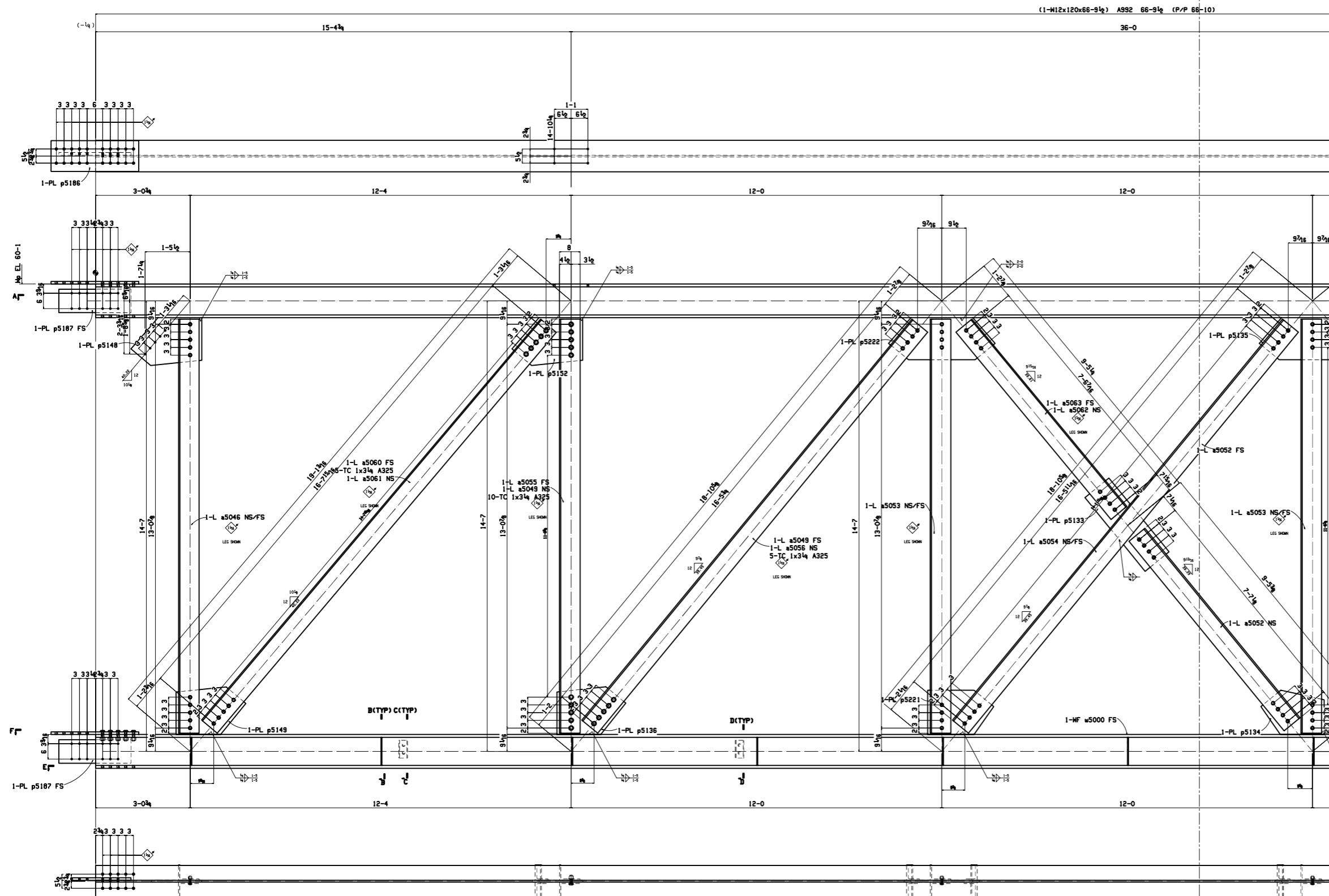


MATCH LINE



DETAIL-1

Section A-A
5179TR1

ONE BEAM 5179TR1

MATCH LINE

GENERAL NOTES:
 ALL FASTENERS TO BE A-325 TENSION CONTROL BOLTS U.N.O
 ALL RE-ENTRY CUTS TO HAVE MIN. 1/2" RADIUS
 FABRICATE ALL MEMBERS WITH MATERIAL CAMBER UP.
 MINIMUM SIZE OF FILLET WELDS TO BE 3/16" U.N.

HOLES: 13/16 DIA. U.N. WELDS: E70XX ELECTRODES (OR APPROVED EQUAL)

PAINT: SURFACE PREP. SSPC - SP2
 PAINT: NO PAINT

MATERIAL: ALL STRUCTURAL SHAPES TO BE ASTM A992 GR 50, ALL TS TO BE
 ASTM A500 GRADE B - ALL ANGLES & PLATES TO BE ASTM A36