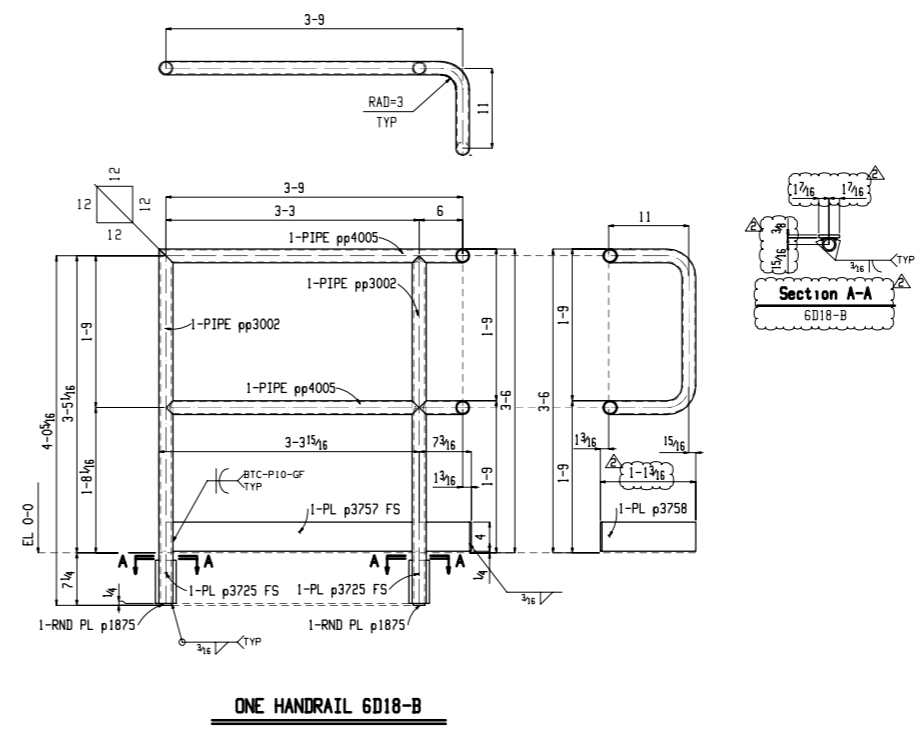
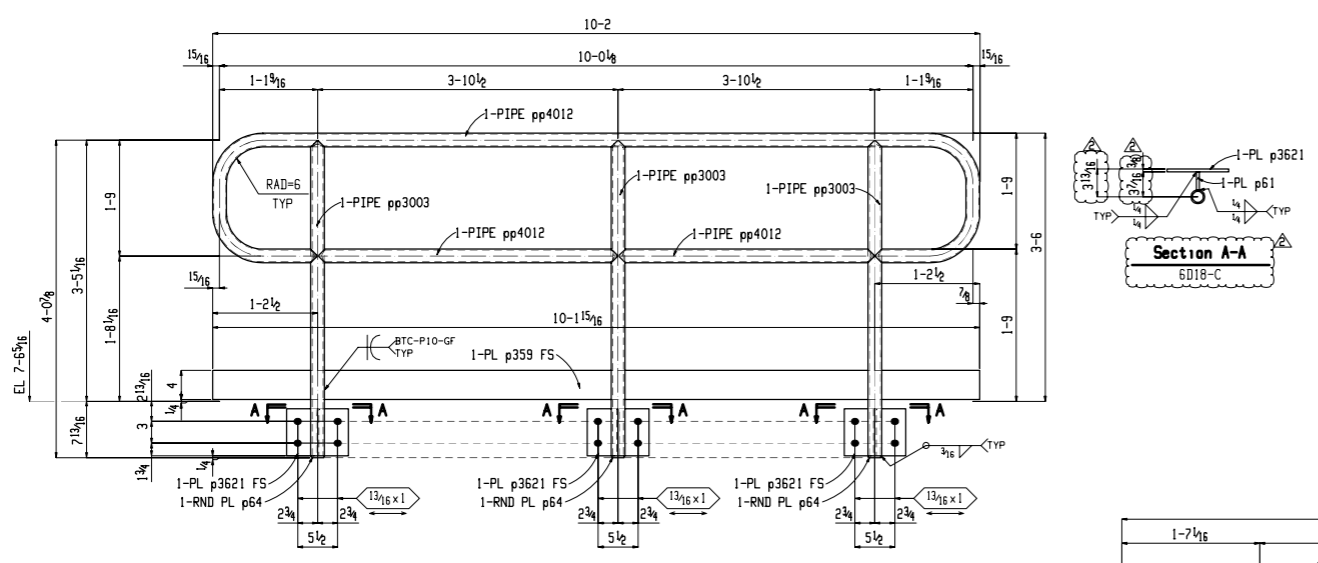


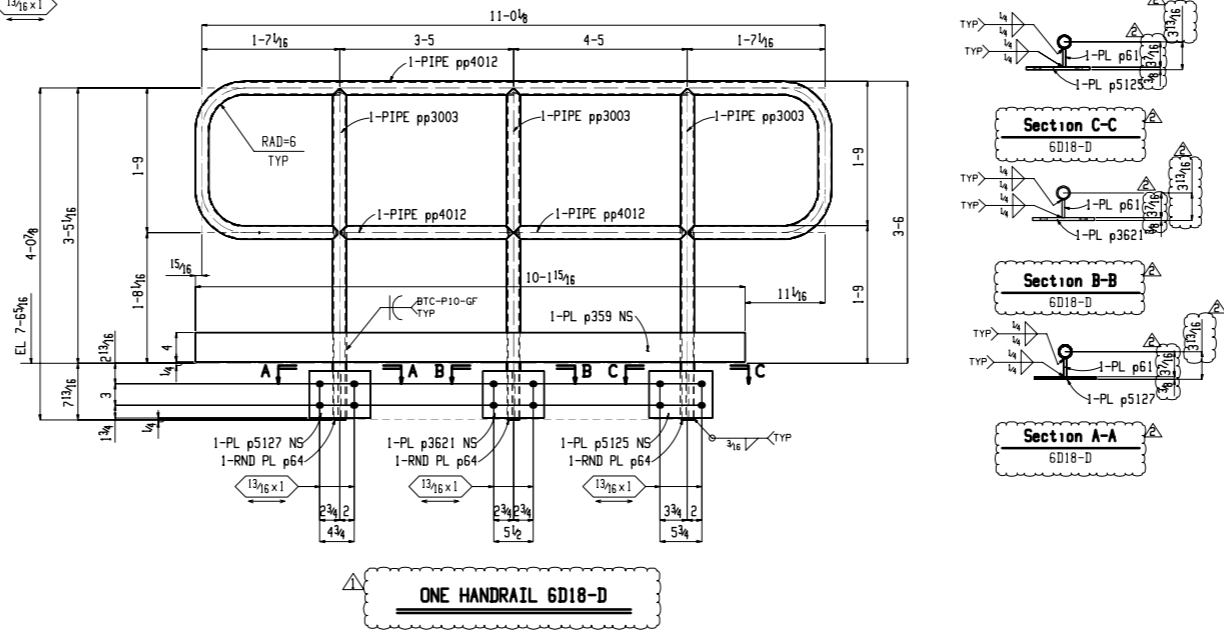
ONE HANDRAIL 6D18-A
 9'-0 L.F. 1 1/2" Ø STD PIPE
 9'-0 L.F. 1 1/2" Ø XS PIPE



ONE HANDRAIL 6D18-B
 12'-0 L.F. 1 1/2" Ø STD PIPE
 9'-0 L.F. 1 1/2" Ø XS PIPE



ONE HANDRAIL 6D18-C
 26'-0 L.F. 1 1/2" Ø STD PIPE
 13'-0 L.F. 1 1/2" Ø XS PIPE



ONE HANDRAIL 6D18-D
 26'-0 L.F. 1 1/2" Ø STD PIPE
 13'-0 L.F. 1 1/2" Ø XS PIPE

BILL OF MATERIAL									
CLASS	MK. NO.	REQ'D	DESCRIPTION	LENGTH	GRADE	REMARKS	WEIGHT	Advance	
M3P	6D18-A	ONE	HANDRAIL						Mt.11
	pp4003	1	PIPE 1 1/2" STD	9 0	A53		24		
	pp3002	1	PIPE 1 1/2" XS	9 0	A53		33		
	p3725	2	PL 3/8x2 1/4	0 6	A36		4		
	p3780	1	PL 1/4x4	2 8 1/2	A36		9		
	p3758	1	PL 1/4x4	1 1 3/4	A36		4		
	p1875	2	RPL 1/4x1 1/8		A36		0		
M3P	6D18-B	ONE	HANDRAIL						86
	pp4005	1	PIPE 1 1/2" STD	12 0	A53		33		
	pp3002	1	PIPE 1 1/2" XS	9 0	A53		33		
	p3725	2	PL 3/8x2 1/4	0 6	A36		4		
	p3757	1	PL 1/4x4	3 11 1/8	A36		13		
	p3758	1	PL 1/4x4	1 1 3/4	A36		4		
	p1875	2	RPL 1/4x1 1/8		A36		0		
M3P	6D18-C	ONE	HANDRAIL						176
	pp4012	1	PIPE 1 1/2" STD	26 0	A53		71		
	pp3003	3	PIPE 1 1/2" XS	13 0	A53		47		
	p3621	3	PL 3/8x5 1/2	0 8 1/2	A36		18		
	p61	3	PL 3/8x2 1/4	0 6 1/2	A36		5		
	p359	1	PL 1/4x4	10 2	A36		35		
	p64	3	RPL 1/4x1 1/8		A36		0		
M3P	6D18-D	ONE	HANDRAIL						270
	pp4012	1	PIPE 1 1/2" STD	26 0	A53		71		
	pp3003	3	PIPE 1 1/2" XS	13 0	A53		142		
	p5125	1	PL 3/8x6 1/2	0 8 1/4	A36		6		
	p3621	1	PL 3/8x5 1/2	0 8 1/2	A36		6		
	p5127	1	PL 3/8x5 1/2	0 8 1/2	A36		6		
	p61	3	PL 3/8x2 1/4	0 6 1/2	A36		5		
	p359	1	PL 1/4x4	10 2	A36		35		
	p64	3	RPL 1/4x1 1/8		A36		0		

CODE = B

Total weight : 606

- SHOP NOTES:**
1. ALL EDGE DISTANCES ARE TO BE 1/4" U.N.
 2. RE-ENTRANT CUTS TO HAVE 1" MINIMUM RADIUS.
 3. ALL BOLTS ARE TO BE ASTM A-325.
 4. ALL MATERIALS ARE A-36 U.N.
 5. ALL HOLES ARE 1/16" Dia. U.N.
 6. ALL WELDING IS TYPE E70XX (L.H.).

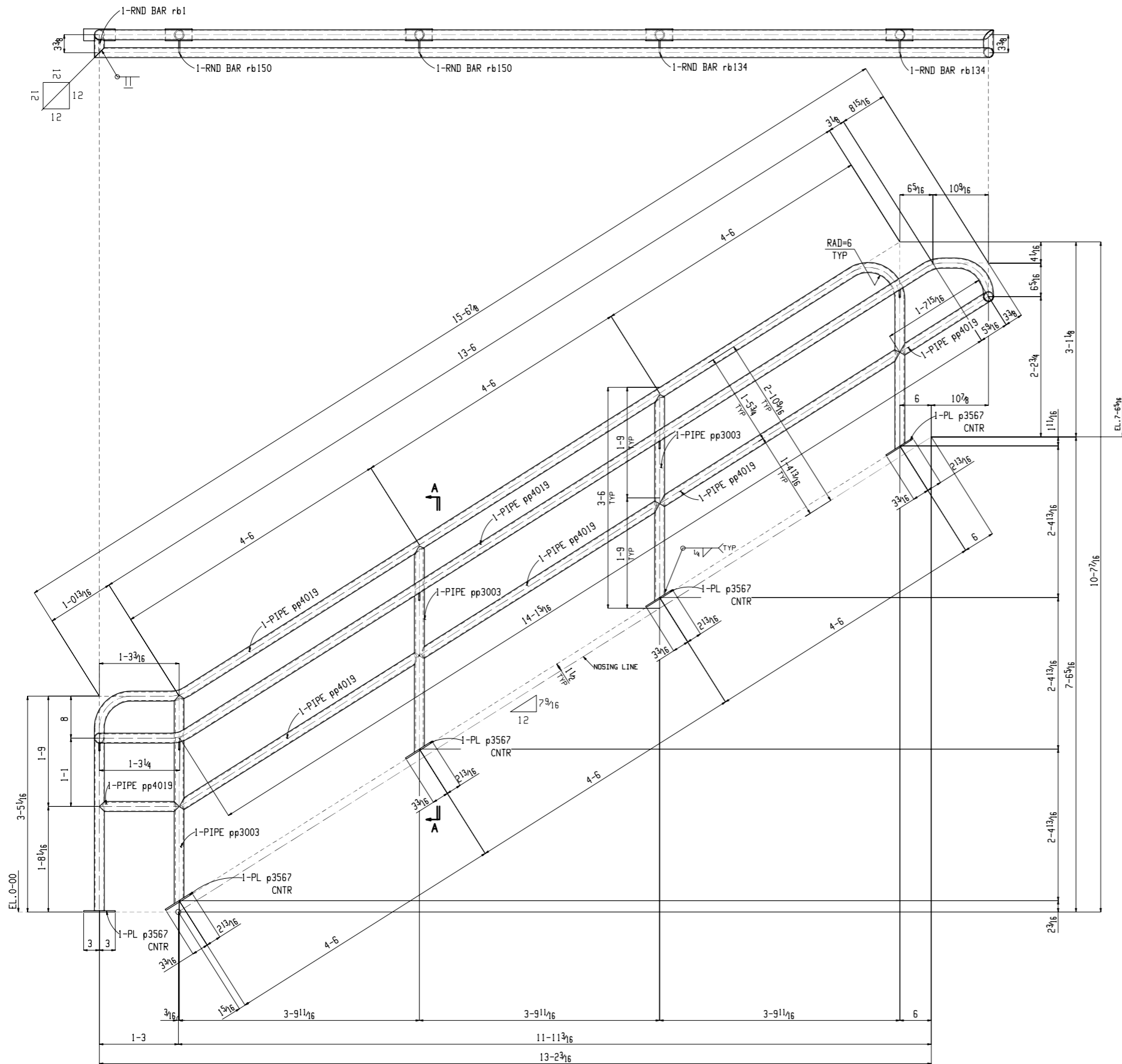
PRINT DISTRIBUTION				
DATE	APP.	DIST.	SHOP	ERECTION

PAINT: SEE DATA SHEET

SHOP CONNECTIONS: SEE NOTES

HOLES: 13/16" Ø UNLESS NOTED

SEQ-6
 100% M3P

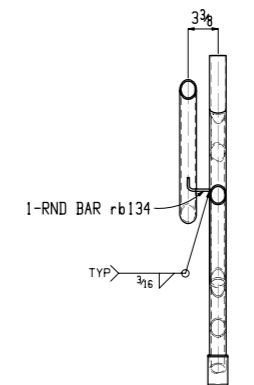


ONE STAIR RAIL 6D20-A

56-0 L.F 1/2" STD PIPE
13-0 L.F 1/2" XS PIPE

BILL OF MATERIAL

CLASS	MK. NO.	REQ'D	DESCRIPTION	LENGTH	GRADE	REMARKS	WEIGHT	Advance
M3P	6D20-A	ONE	STAIR RAIL				205	M11
	pp4019	1	PIPE 1/2" STD	56	0	A53	152	
	pp3006	1	PIPE 1/2" XS	13	0	A53	47	
	p3567	5	PL 1/4"x2 1/4"	0	6	A36	5	
	rb150	1	RB 1/4"	0	3 7/16"	A36	0	
	rb134	3	RB 1/4"	0	3 7/16"	A36	0	
	rb1	1	RB 1/4"	0	3 3/8"	A36	0	



Section A-A
6D20-A

CODE = B

Total weight : 205

SHOP NOTES:

1. ALL EDGE DISTANCES ARE TO BE 1/4" U.N.
2. RE-ENTRANT CUTS TO HAVE 1" MINIMUM RADIUS.
3. ALL BOLTS ARE TO BE ASTM A-325.
4. ALL MATERIALS ARE A-36 U.N.
5. ALL HOLES ARE 1 3/16" Dia. U.N.
6. ALL WELDING IS TYPE E70XX (L.H.).

SEQ-6

100% M3P

PRINT DISTRIBUTION

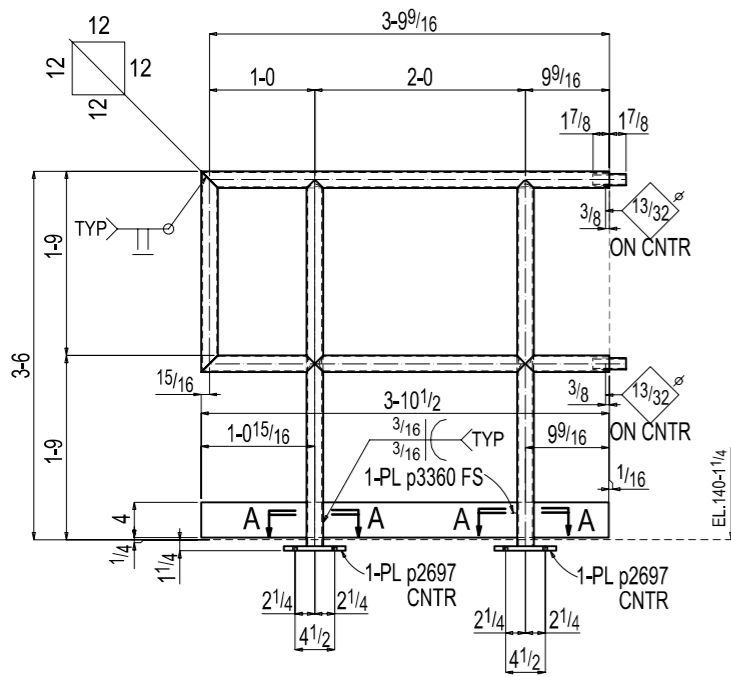
DATE APP. DIST. SHOP ERECTION

DATE	APP.	DIST.	SHOP	ERECTION

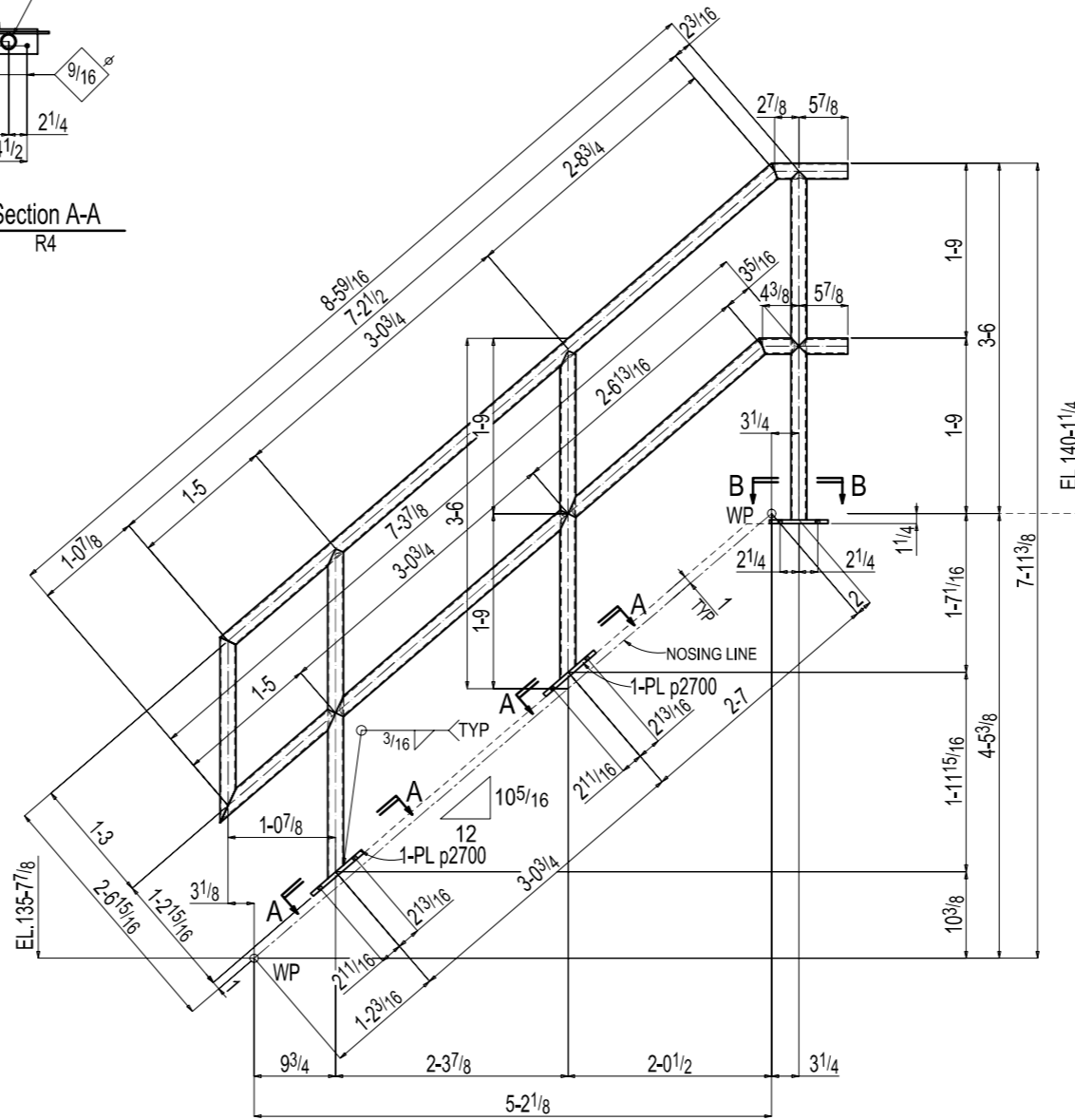
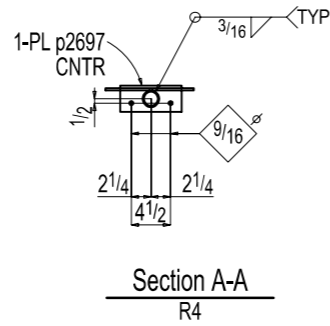
PAINT: SEE DATA SHEET

SHOP CONNECTIONS: SEE NOTES

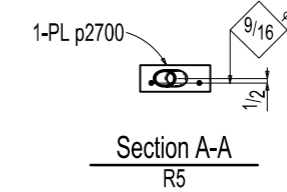
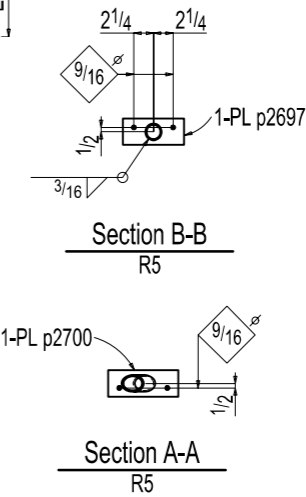
HOLES: 1 3/16" UNLESS NOTED



ONE GUARDRAIL R4

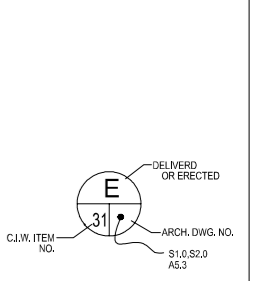


ONE STAIRRAIL R5



BILL OF MATERIAL						
MARK	QTY	DESCRIPTION	LENGTH	WEIGHT	REMARKS	ADVANCE MILL #
R4	ONE	GUARDRAIL		65		
R4	1	PIPE 1 1/2 STD	17'-0	46	A53	
p2697	2	PL 1 1/2 x 3	7	6	A36	
p3360	1	PL 1 1/2 x 4	3'-10 1/16	13	A36	
	2	WAGNER G3318			B/O	
R5	ONE	STAIRRAIL		87		
R5	1	PIPE 1 1/2 STD	28'-6	78	A53	
p2700	2	PL 1 1/2 x 3	8	7	A36	
p2697	1	PL 1 1/2 x 3	7	3	A36	

FIELD BOLT LIST



ROOF DUNNAGE -SHOP Pc. DET'S.

SHOP NOTE:
 ALL WELD TO BE SEALED WELD.
 ADD VENT HOLE AS REQUIRED
 PLUG VENT HOLE AFTER GALVANIZE.