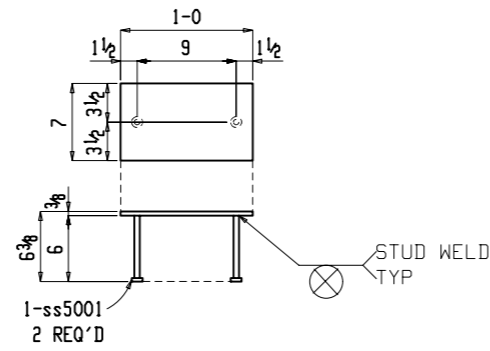
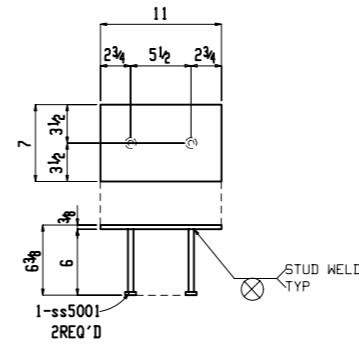


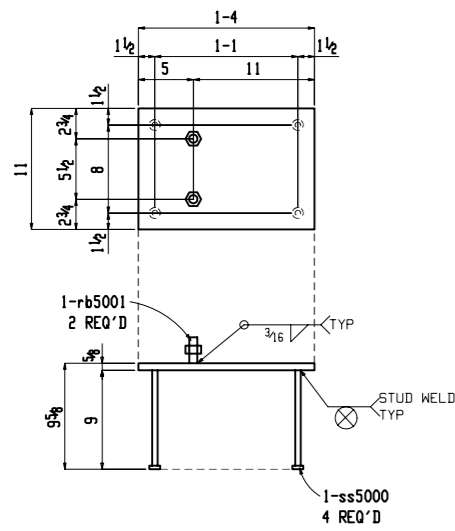
**58 EMBEDS 5002-EM1**



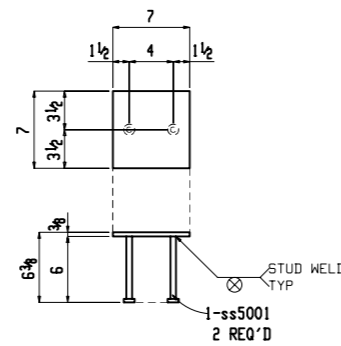
**6 EMBEDS 5002-EM2**



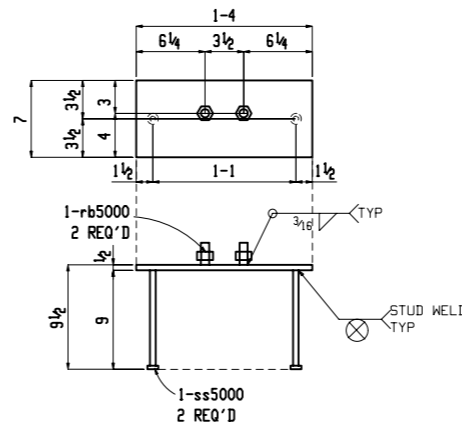
**15 EMBEDS 5002-EM3**



**2 EMBEDS 5002-EM4**



**85 EMBEDS 5002-EM5**



**ONE EMBED 5002-EM6**

**BILL OF MATERIAL**

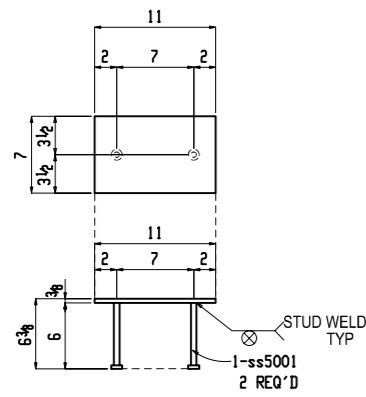
PC MARK	MINOR MARK	QTY TOTAL	DESCRIPTION	LENGTH FEET-INCHES	REMARKS	WEIGHT TOTAL
5002-EM1		58	EMBED			859
	5002-EM1	58	PL 3/8x11	1 - 0	A36	814
	ss5001	116	1/2 Dia HEADED STUD	0 - 6	A108	45
5002-EM2		6	EMBED			58
	5002-EM2	6	PL 3/8x7	1 - 0	A36	54
	ss5001	12	1/2 Dia HEADED STUD	0 - 6	A108	5
5002-EM3		15	EMBED			134
	5002-EM3	15	PL 3/8x7	0 - 11	A36	123
	ss5001	30	1/2 Dia HEADED STUD	0 - 6	A108	12
5002-EM4		2	EMBED			68
	5002-EM4	2	PL 3/8x11	1 - 4	A36	62
	rb5001	4	RB 3/4 THREADED ROD	0 - 2 3/4	A36	1
	ss5000	8	1/2 Dia HEADED STUD	0 - 9	A108	4
	NUT	4	3/4 Dia A563			
5002-EM5		85	EMBED			509
	5002-EM5	85	PL 3/8x7	0 - 7	A36	443
	ss5001	170	1/2 Dia HEADED STUD	0 - 6	A108	66
5002-EM6		ONE	EMBED			17
	5002-EM6	1	PL 1/2x7	1 - 4	A36	16
	rb5000	2	RB 3/4 THREADED ROD	0 - 2	A36	0
	ss5000	2	1/2 Dia HEADED STUD	0 - 9	A108	1
	NUT	2	3/4 Dia A563			

GENERAL NOTES:  
 ALL FASTENERS TO BE A-325 TENSION CONTROL BOLTS U.N.O  
 ALL RE-ENTRY CUTS TO HAVE MIN. 1/2" RADIUS  
 FABRICATE ALL MEMBERS WITH MATERIAL CAMBER UP.  
 MINIMUM SIZE OF FILLET WELDS TO BE 3/16" U.N.

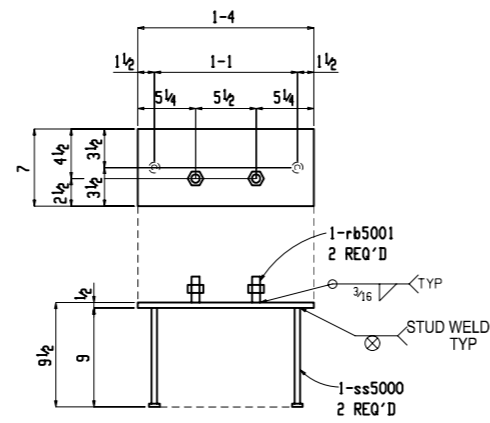
HOLES: 13/16 DIA. U.N. WELDS: E70XX ELECTRODES (OR APPROVED EQUAL)

**BILL OF MATERIAL**

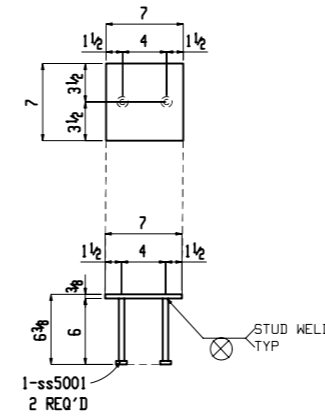
PC MARK	MINOR MARK	QTY TOTAL	DESCRIPTION	LENGTH FEET-INCHES	REMARKS	WEIGHT TOTAL
5006-EM1		14 EMBED				125
	5006-EM1	14	PL <sub>2</sub> x7	0-11	A36	115
	ss5001	28	1/2 Dia HEADED STUD	0-6	A108	11
5006-EM2		2 EMBED				35
	5006-EM2	2	PL <sub>2</sub> x7	1-4	A36	32
	rb5001	4	RB <sub>3/4</sub> THREADED ROD	0-2 3/4	A36	1
	ss5000	4	WS <sub>1/2</sub> HEADED STUD	0-9	A108	2
	NUT	4	3/4 Dia A563	-	-	-
5006-EM3		11 EMBED				66
	5006-EM3	11	PL <sub>2</sub> x7	0-7	A36	57
	ss5001	22	1/2 Dia HEADED STUD	0-6	A108	8
5006-EM4		ONE EMBED				17
	5006-EM4	1	PL <sub>2</sub> x7	1-4	A36	16
	rb5000	2	RB <sub>3/4</sub> THREADED ROD	0-2	A36	0
	ss5000	2	1/2 Dia HEADED STUD	0-9	A108	1
	NUT	2	3/4 Dia A563	-	-	-
5006-EM5		24 EMBED				1272
	5006-EM5	24	PL <sub>4</sub> x6	10-0	A36	1225
	ss5001	120	1/2 Dia HEADED STUD	0-6	A108	46
5006-EM6		ONE EMBED				17
	5006-EM6	1	PL <sub>2</sub> x7	1-4	A36	16
	rb5002	2	RB <sub>3/4</sub> THREADED ROD	0-1 1/4	A36	0
	ss5000	2	WS <sub>1/2</sub> HEADED STUD	0-9	A108	1
	NUT	2	3/4 Dia A563	-	-	-



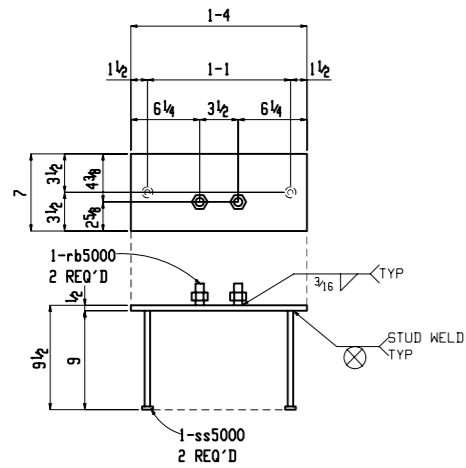
**14 EMBEDS 5006-EM1**



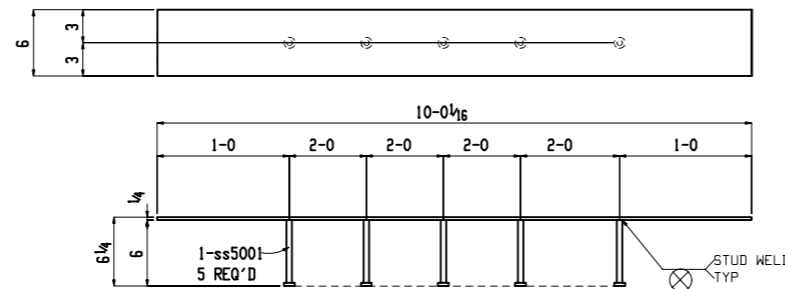
**2 EMBEDS 5006-EM2**



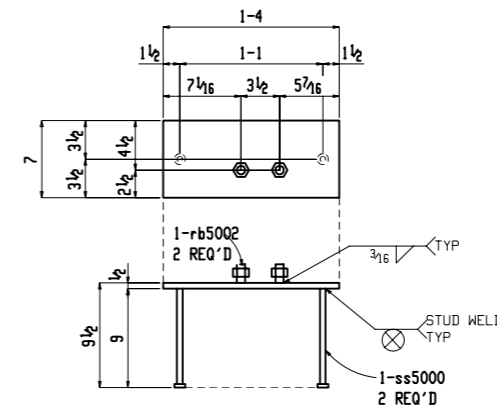
**11 EMBEDS 5006-EM3**



**ONE EMBED 5006-EM4**



**24 EMBEDS 5006-EM5**



**ONE EMBED 5006-EM6**

GENERAL NOTES:  
 ALL FASTENERS TO BE A-325 TENSION CONTROL BOLTS U.N.O  
 ALL RE-ENTRY CUTS TO HAVE MIN. 1/2" RADIUS  
 FABRICATE ALL MEMBERS WITH MATERIAL CAMBER UP.  
 MINIMUM SIZE OF FILLET WELDS TO BE 3/16" U.N.

HOLES: 13/16 DIA. U.N. WELDS: E70XX ELECTRODES (OR APPROVED EQUAL)