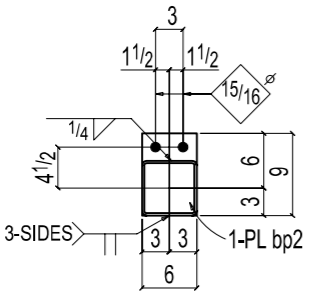
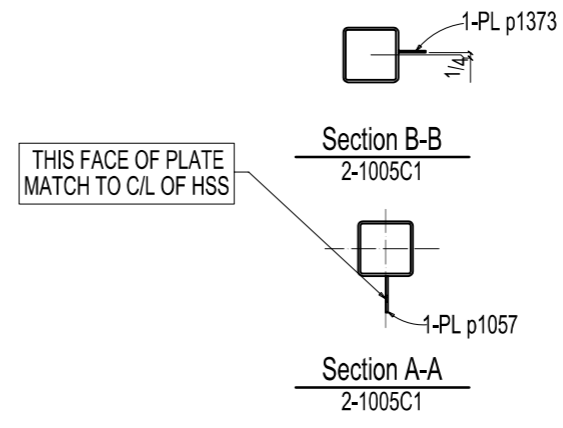
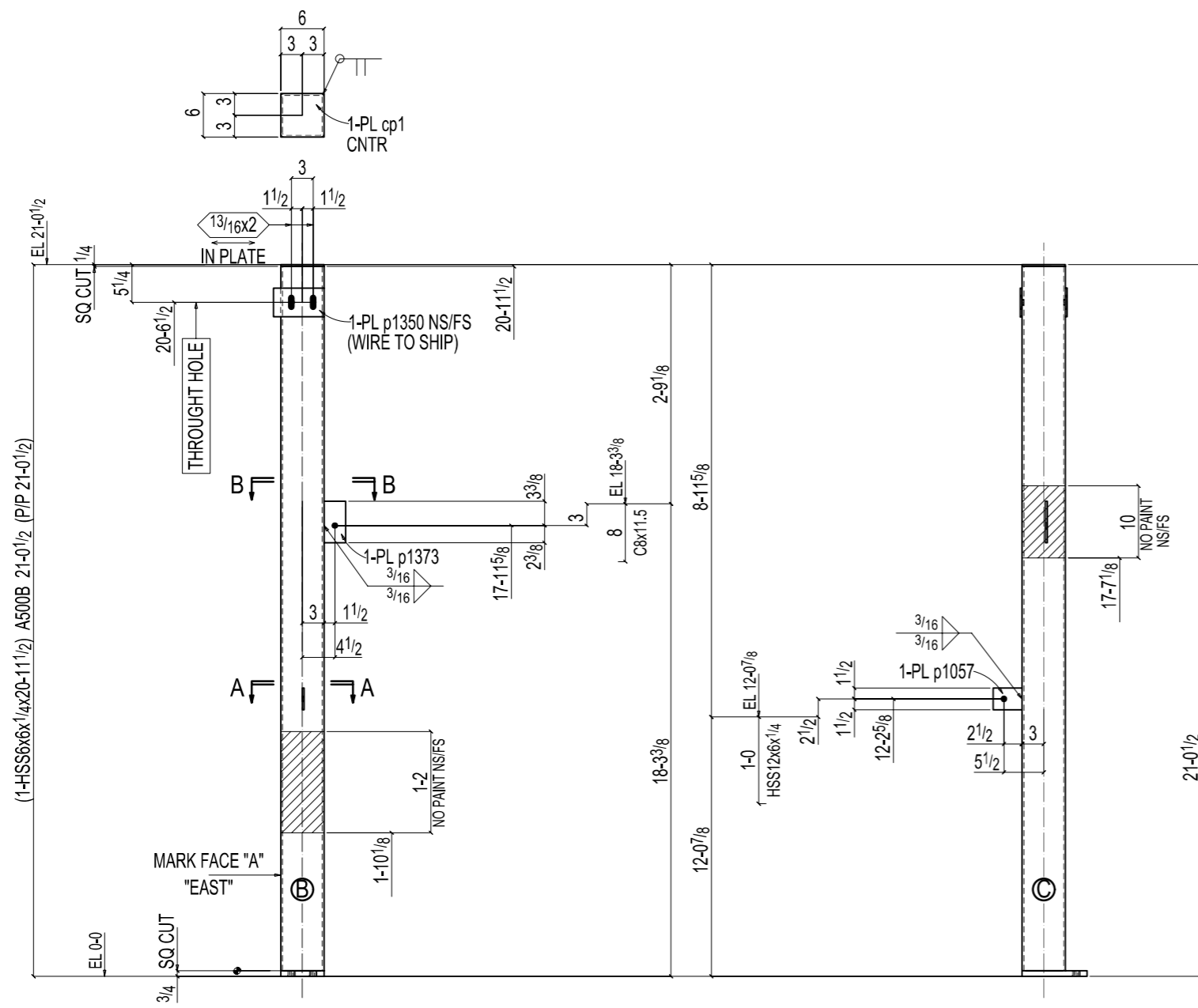




SHIPPING MARK	NO PCS	PROFILE	LENGTH	PIECE MARK	MAT'L GRADE	NOTES
2-1005C1	ONE	COLUMN				
	1	HSS6x6x1/4	20-11 1/2	2-1005C1	A500B	S2E
	1	PL 3/4x6	9	bp2	A36	
	1	PL 1/4x6	6	cp1	A36	
	2	PL 1/4x4	7	p1350	A36	
	1	PL 1/4x3	5 3/4	p1373	A36	
	1	PL 1/4x3	4	p1057	A36	
		FIELD BOLTS				
	2	TC 3/4 Dia A325	8 1/2			+2PL, 2HD WASH



**ONE COLUMN 2-1005C1**

AT GRID:  
C10.9 & A'

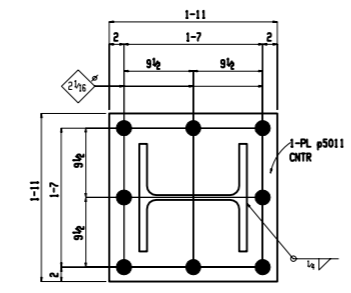
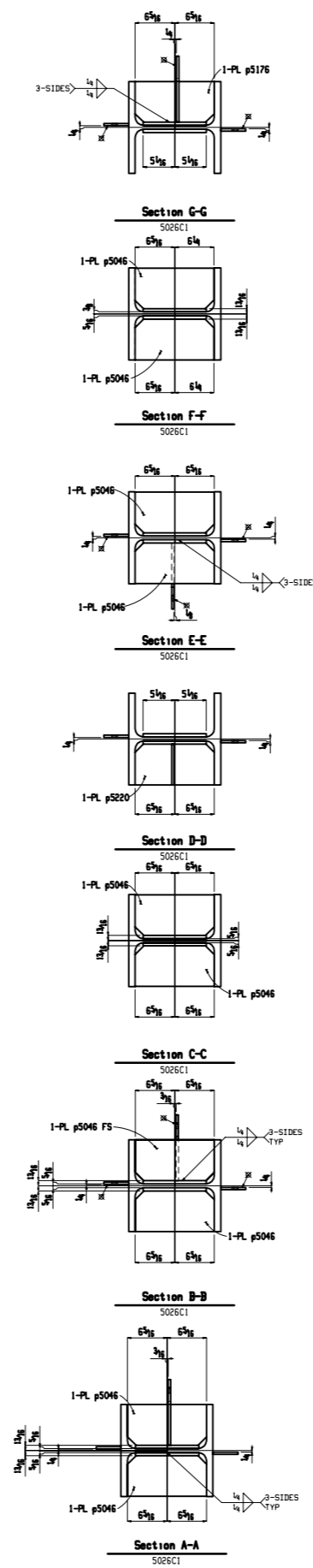
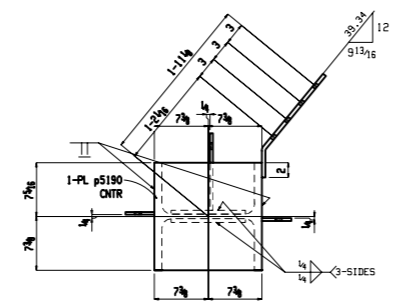
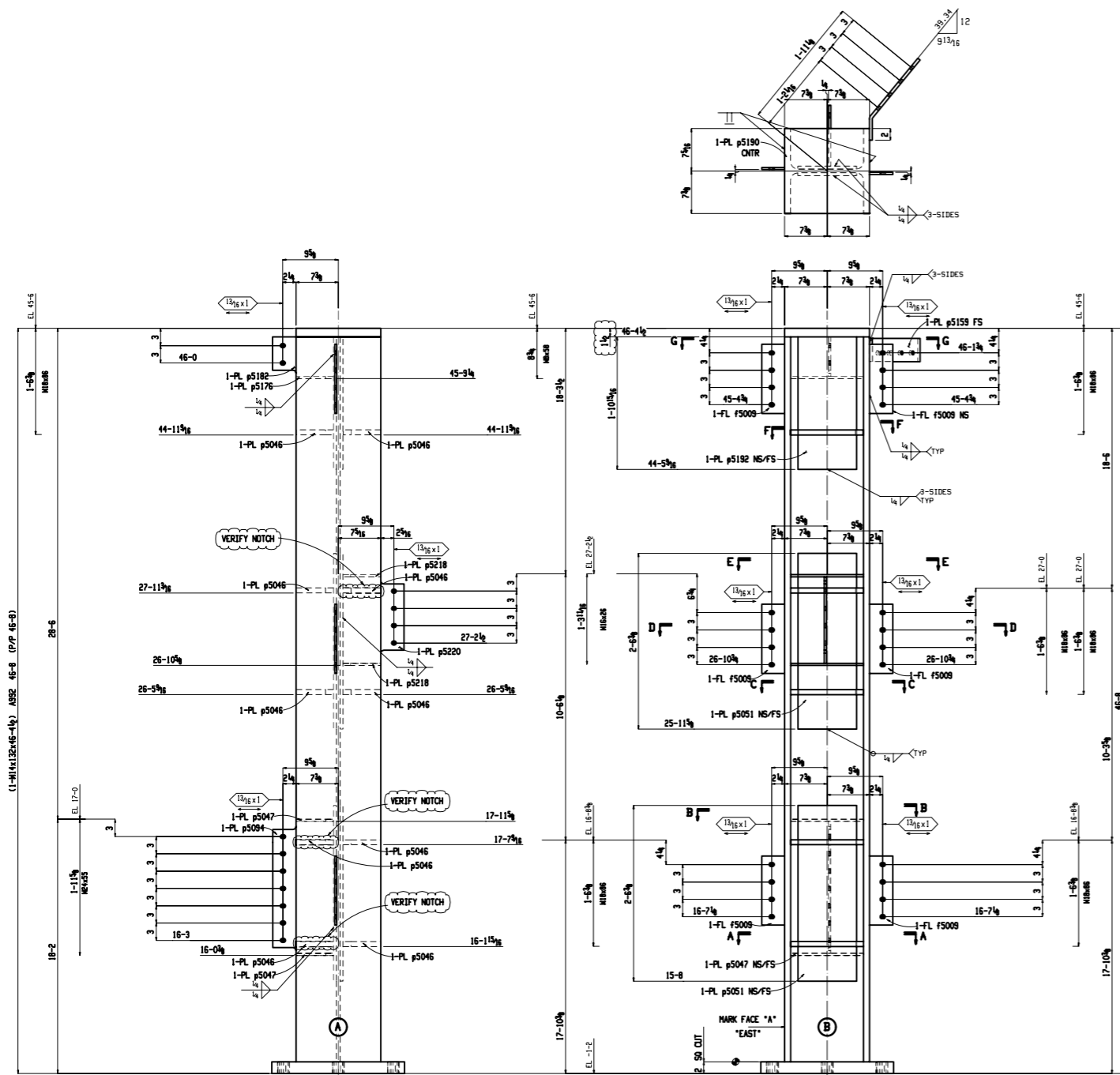
REVISION	DATE	BY	DESCRIPTION
0	10/20/2016	TFL	ISSUED FOR FABRICATION
A	09/20/2016	TFL	ISSUED FOR APPROVAL

UNLESS OTHERWISE SPECIFIED:  
 ALLOW 1/8" STOCK AT MACHINED SURFACES  
 DRILLED HOLES TO BE DRILLED AFTER FABRICATION  
 CENTERS FOR DRILLED HOLES " 1/32"  
 MACHINED DECIMAL TOLERANCES " ±.005"  
 MACHINED FRACTIONAL TOLERANCES " 1/64"  
 NON-MACHINED TOLERANCES " 1/16"  
 TOLERANCES ARE NOT ACCUMULATIVE.

MARK	QTY	ELEV.	GRID LOC.	ZONE
2-1005C1	1	21'-0 1/2	C10.9/A	1







**ONE COLUMN 5026C1**  
 M | 14 1/2 x 5/8  
 F | 14 1/2 x 1  
 K | 2 1/2 x 1 1/4

AT GRID:  
 DG & DG

**BILL OF MATERIAL**

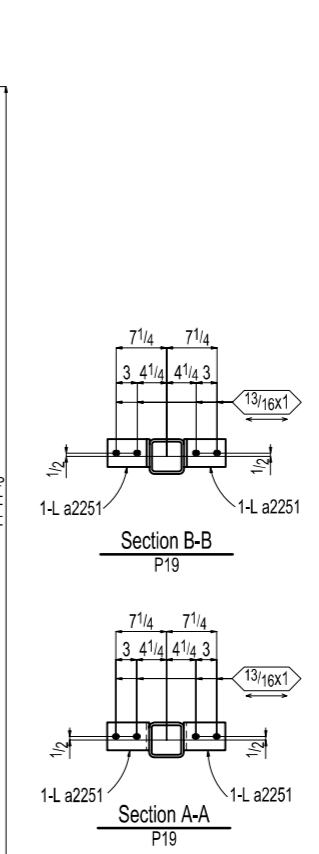
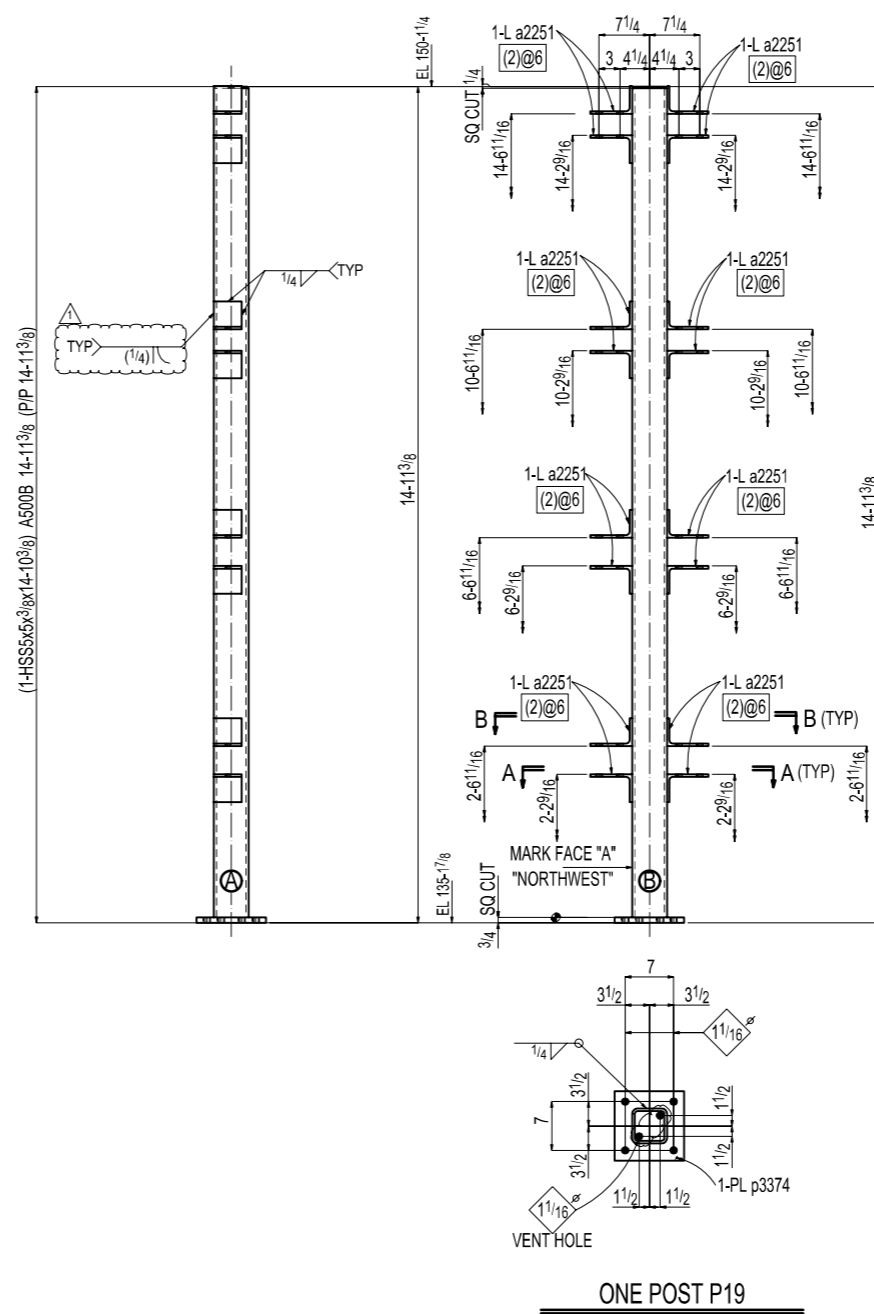
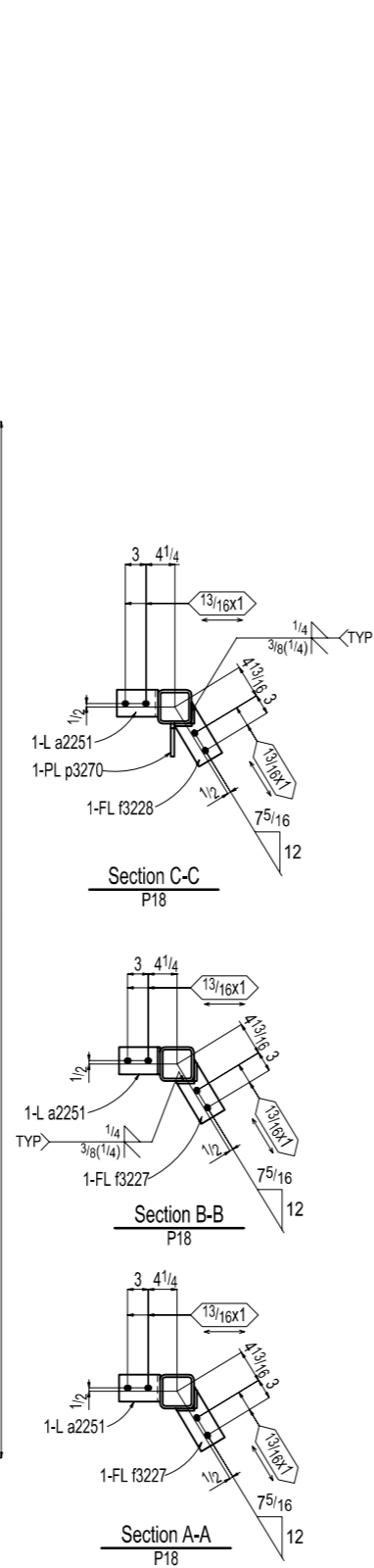
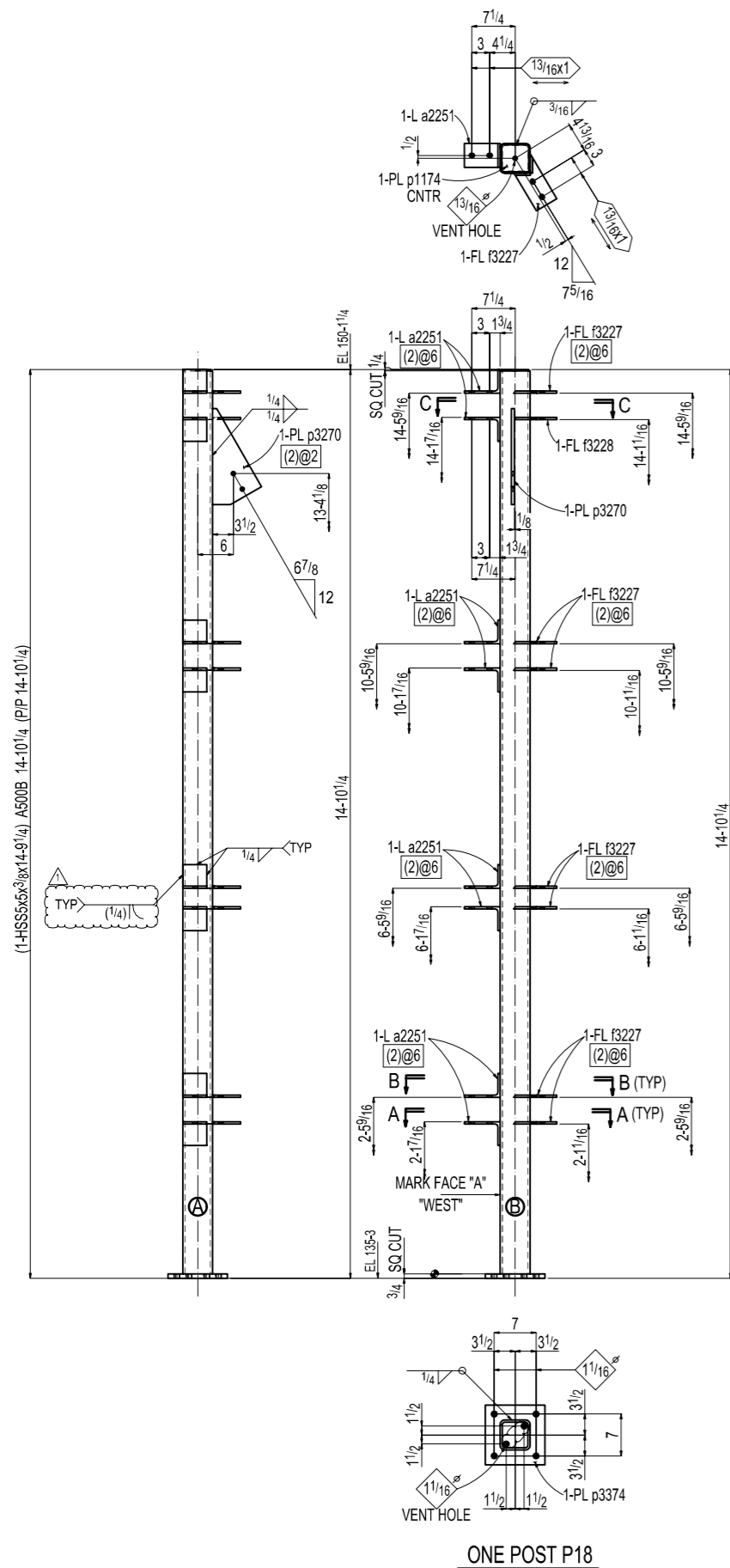
PC MARK	MINOR MARK	QTY TOTAL	DESCRIPTION	LENGTH FEET-INCHES	REMARKS	WEIGHT TOTAL
5026C1			ONE COLUMN			7055
	5026C1	1	M14x132	46 4 1/2	S1E A992	6122
	p5011	1	PL2x23	1 11	A36	285
	p5190	1	PL1 1/2 x 14 1/2	1 2 1/4	A572-50	92
	p5046	10	PL 3/8 x 6 1/2	1 0 3/8	A572-50	199
	p5159	1	PL 1/2 x 17	0 4	BENT A36	9
	p5051	4	PL 1/2 x 10 1/4	2 6 3/8	A572-50	175
	p5192	2	PL 3/8 x 10 1/4	1 10 1/4	A572-50	66
	p5094	1	PL 3/8 x 10 1/4	1 10 3/8	A36	-2
	p5220	1	PL 3/8 x 10 1/4	1 3	A36	14
	p5182	1	PL 3/8 x 6 1/2	0 10 1/4	A36	7
	p5047	4	PL 3/8 x 6 1/2	1 0 3/8	A36	34
	p5176	1	PL 3/8 x 6 1/2	1 0 3/8	A36	9
	p5218	2	PL 3/8 x 6 1/2	1 0 3/8	A36	17
	f5009	6	FB 3/8 x 4	1 0	A572-50	29
			FIELD BOLTS			
		4	TC 3/4 Dia A325	0 1 1/4	+1HD WASH	

**GENERAL NOTES:**  
 ALL FASTENERS TO BE A-325 TENSION CONTROL BOLTS U.N.O  
 ALL RE-ENTRY CUTS TO HAVE MIN. 1/2" RADIUS  
 FABRICATE ALL MEMBERS WITH MATERIAL CAMBER UP.  
 MINIMUM SIZE OF FILLET WELDS TO BE 3/16" U.N.

HOLES: 13/16 DIA. U.N.      WELDS: E70XX ELECTRODES (OR APPROVED EQUAL)

PAINT: SURFACE PREP. SSPC - SP2  
 PAINT: NO PAINT

MATERIAL: ALL STRUCTURAL SHAPES TO BE ASTM A992 GR 50, ALL TS TO BE ASTM A500 GRADE B - ALL ANGLES & PLATES TO BE ASTM A36



BILL OF MATERIAL						
MARK	QTY	DESCRIPTION	LENGTH	WEIGHT	REMARKS	ADVANCE MILL #
P18	ONE POST			433		
P18	1	HSS5x5x3/8	14-9 1/4	328	S2E A500B	10-2
a2251	8	L6x4x3/8	4	33	A36	
p3374	1	PL 3/4x10	10	21	A36	
p3270	1	PL 1/2x8 3/16	14-1 1/8	18	A36	
f3227	7	FL 3/8x4	8 11/16	26	A36	
f3228	1	FL 3/8x4	8 11/16	4	A36	
p1174	1	PL 1/4x4 1/2	4 1/2	1	A36	
P19	ONE POST			420		
P19	1	HSS5x5x3/8	14-10 3/8	331	S2E A500B	10-1
a2251	16	L6x4x3/8	4	66	A36	
p3374	1	PL 3/4x10	10	21	A36	
p1174	1	PL 1/4x4 1/2	4 1/2	1	A36	

**FIELD BOLT LIST**

-PLATED  
(08) 3/4" x 10 HILTI-HT RE-500V3  
(08) 3/4" x 6 LEVELING NOT AND PL W

-GALV.  
(02) 3/4" x 2 A325-TC(N/W)  
(32) 3/4" x 6 A325(N/W)

DELIVERED OR ERECTED

31

CL.W. ITEM NO. ARCH. DWG. NO. S1.0, S2.1

**SCREEN WALL SHOP P<sub>c</sub> DET'S**

SHOP NOTE:  
PLUG VENT HOLE AFTER GALVANIZE.